

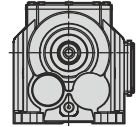
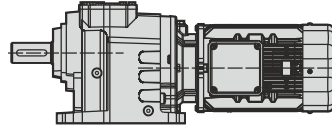
DE PRODUKTE
FR PRODUITS

EN PRODUCTS
ES PRODUCTOS

IT PRODOTTI

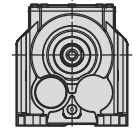
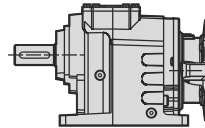
A... / MOTOR

Fußbefestigung / Foot mounting / Fissaggio piede /
Fixation à pattes / Fijación por patas



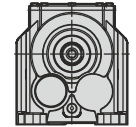
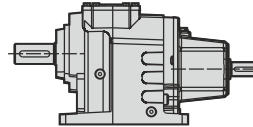
A... / PAM

Fußbefestigung / Foot mounting / Fissaggio piede /
Fixation à pattes / Fijación por patas



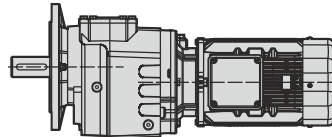
A... / W

Fußbefestigung / Foot mounting / Fissaggio piede /
Fixation à pattes / Fijación por patas



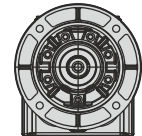
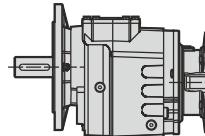
F... / MOTOR

Flanschbefestigung / Flange mounting / Fissaggio flangia /
Fixation à bride / Fijación por brida



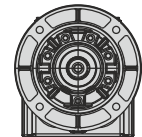
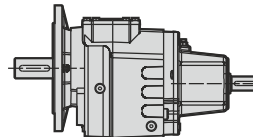
F... / PAM

Flanschbefestigung / Flange mounting / Fissaggio flangia /
Fixation à bride / Fijación por brida



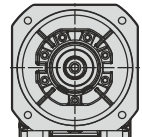
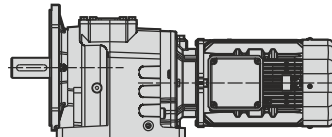
F... / W

Flanschbefestigung / Flange mounting / Fissaggio flangia /
Fixation à bride / Fijación por brida



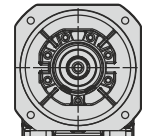
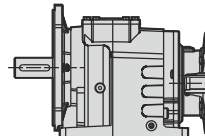
AF... / MOTOR

Fuß-Flanschbefestigung / Foot-flange mounting / Fissaggio piede-flangia
Fixation à paaes et bride / Fijación patas-brida



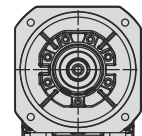
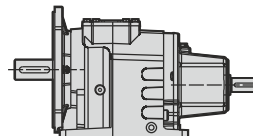
AF... / PAM

Fuß-Flanschbefestigung / Foot-flange mounting / Fissaggio piede-flangia
Fixation à paaes et bride / Fijación patas-brida



AF... / W

Fuß-Flanschbefestigung / Foot-flange mounting / Fissaggio piede-flangia
Fixation à paaes et bride / Fijación patas-brida



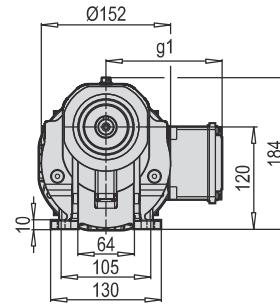
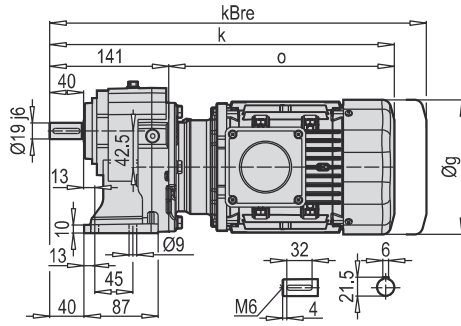
Typ / Type / Tipo Type / Tipo	I _{ges}	4-pol 50Hz 1400rpm n ₂ [min ⁻¹]	M _{amax} f _B =1 4 - pol. [Nm]	W			IEC - PAM							
				P _{1max} 4 - pol. 1400 rpm [kW]	FR1 [kN]	FR2 (a) [KN]	f _B ⇨ 49 - 112							
A303	282.17	5.0	300	0.16	1.4	6.6	63*	71*						
F303	227.56	6.2	300	0.19	1.4	6.6	63	71*						
W	205.01	6.8	300	0.21	1.4	6.6	63	71*						
	165.33	8.5	300	0.27	1.4	6.6	63	71*						
123	141.89	9.9	300	0.31	1.4	6.6	63	71*	80*	90*				
+	125.65	11.1	300	0.35	1.3	6.6	63	71*						
PAM - IEC	114.42	12.2	300	0.38	1.3	6.6	63	71	80*	90*				
	86.96	16.1	300	0.51	1.3	6.6	63	71	80*	90*				
123	76.42	18.3	300	0.58	1.3	6.6	63	71	80*	90*				
	61.63	22.7	300	0.71	1.3	6.6	63	71	80*	90*				
A302	55.03	25.4	280	0.75	1.3	6.6	71	80	90*					
F302	48.22	29.0	280	0.85	1.2	6.6	71	80	90*					
W	44.38	31.5	280	0.93	1.2	6.6	71	80	90*					
	38.33	36.5	280	1.07	1.2	6.6	71	80	90*					
123	34.62	40.4	280	1.19	1.2	6.6	71	80	90*					
+	30.91	45.3	280	1.33	1.1	6.6	71	80	90*					
PAM - IEC	27.92	50.1	280	1.47	1.1	6.6	71	80	90*					
	26.45	52.9	260	1.44	1.1	6.6	71	80	90*	100*	112*			
123	23.49	59.6	260	1.62	1.0	6.3	71	80	90					
	21.33	65.6	250	1.72	1.0	6.1	71	80	90	100*	112*			
	19.29	72.6	250	1.90	1.0	5.8	71	80	90	100*	112*			
	16.21	86.3	250	2.26	0.9	5.4	71	80	90	100*	112*			
	13.81	101.4	250	2.65	0.8	5.0	71	80	90	100*	112*			
	12.00	116.7	250	3.05	0.7	4.7	71	80	90	100	112*			
	10.50	133.4	240	3.35	0.6	4.5	71	80	90	100	112*			
	9.11	153.7	210	3.38	0.6	4.4	71	80	90	100	112*			
	7.34	190.6	160	3.19	0.7	4.4	71	80	90	100	112*			
	5.58	250.8	160	4.20	0.4	3.9	71	80	90	100	112*			
A301	8.88	157.7	55	0.91	1.2	1.0	71	80	90*					
F301	7.78	180.0	50	0.94	1.2	1.0	71	80	90*					
W	6.18	226.5	50	1.19	1.2	0.9	71	80	90*					
	5.58	250.7	50	1.31	1.2	0.9	71	80	90*					
121	5.08	275.8	45	1.30	1.2	0.9	71	80	90*					
+	4.27	328.1	45	1.55	1.1	0.8	71	80	90					
PAM - IEC	3.65	383.9	45	1.81	1.1	0.8	71	80	90					
	3.16	443.3	40	1.86	1.1	0.7	71	80	90					
121	2.76	506.9	30	1.59	1.1	0.7	71	80	90					
	2.59	540.4	30	1.70	1.1	0.7		80	90					
	2.04	686.8	25	1.80	1.1	0.7		80	90					
	1.47	953.2	25	2.50	1.0	0.6	71	80	90					

Keine IEC - PAM-Verbindung / No IEC - PAM assembling on empty fields / Nessun assemblaggio IEC - PAM su campi vuoti / Pas d'assemblage IEC - PAM sur champs vides / Sin montaje IEC - PAM en campos vacíos

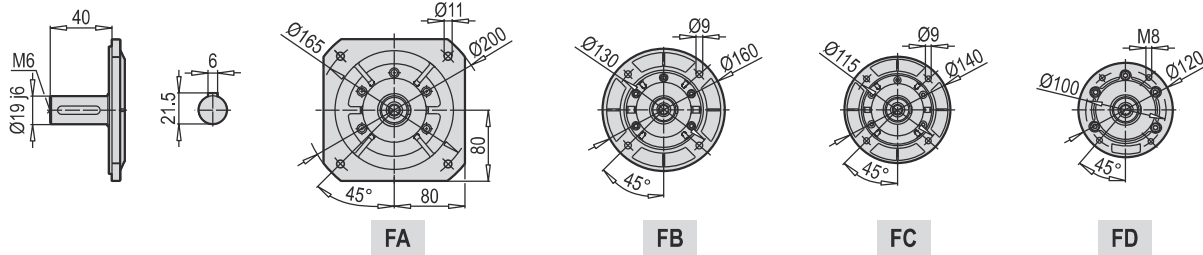
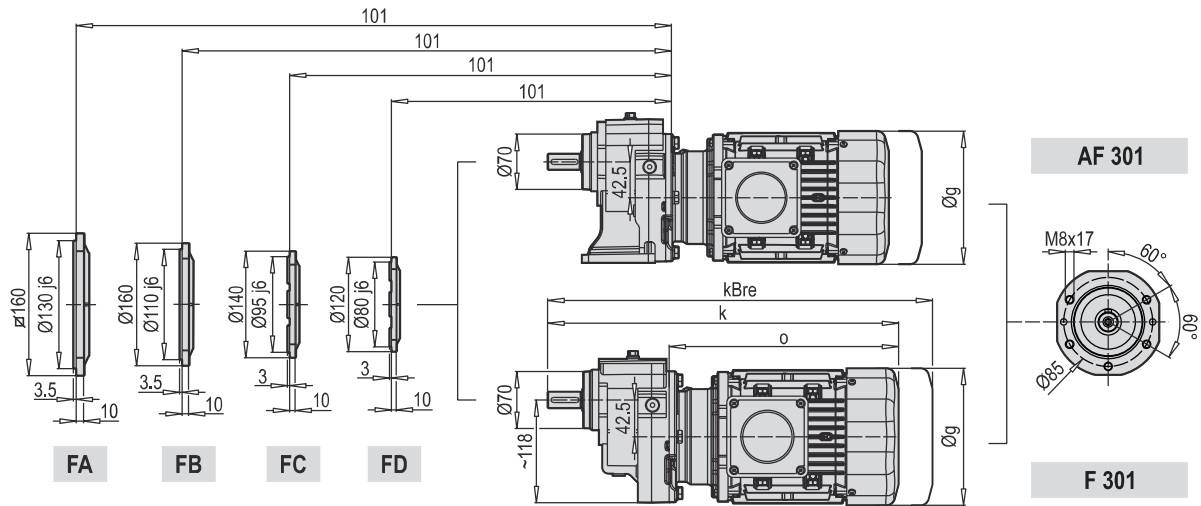
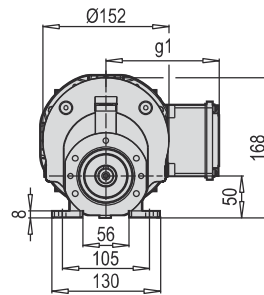
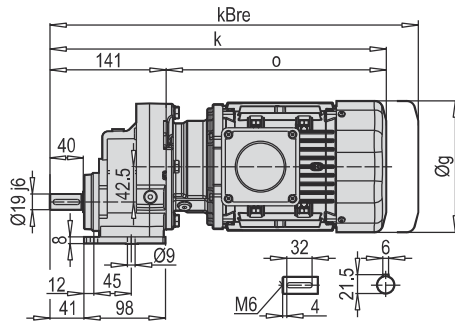
63 IEC - PAM-Verbindung möglich / IEC - PAM assembling available on numbered fields / Montaggio IEC - PAM disponibile su campi numerati / Assemblage IEC - PAM disponible sur champs numérotés / Assemblage IEC - PAM disponible sur champs numérotés /

80* Bei IEC - PAM-Verbindungen, sollten die P_{1max}-Werte nicht überschritten werden / Do not exceed the P_{1max} values indicated on fields with asterisk / Non superare i valori P_{1max} indicati sui campi con l'asterisco / Ne pas dépasser les valeurs P_{1max} indiquées sur les champs avec astérisque / No exceda los valores de P_{1max} indicados en los campos con asterisco

A 301

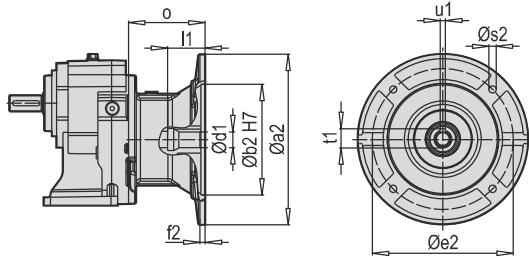


AF-M 301

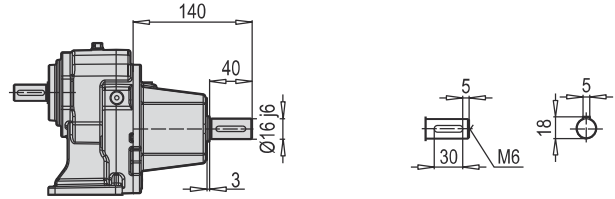


	71 M	80 M	90 S/L				
g	140	172	182				
g1	119	131	130				
k	382	406	489				
kBre	442	477	557				
o	241	265	348				

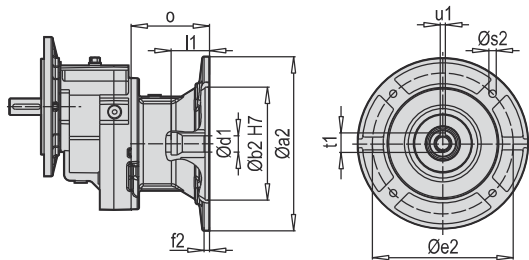
A 301 PAM B5/B14



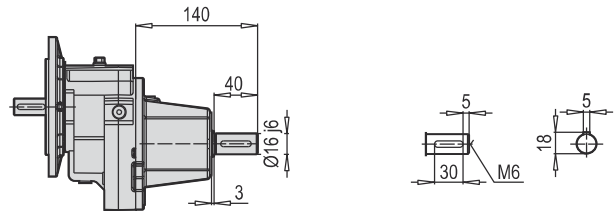
A 301 W



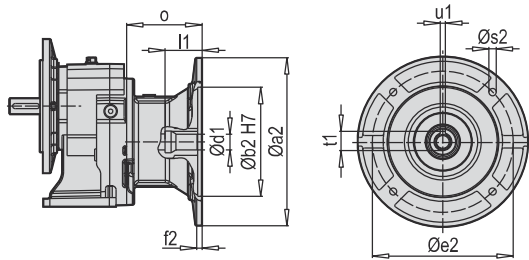
F 301 PAM B5/B14



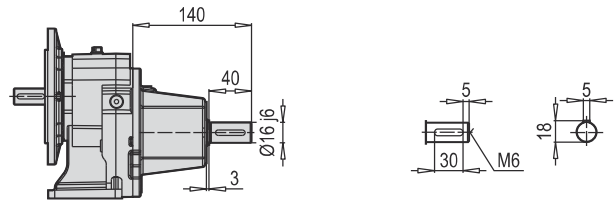
F 301 W



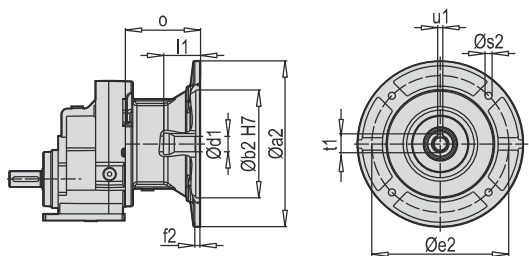
AF 301 PAM B5/B14



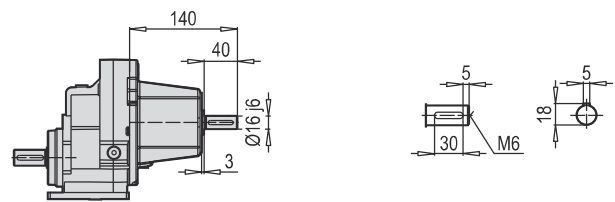
AF 301 W



AF-M 301 PAM B5/B14



AF-M 301 W



W ~ Kg	
A/F 301	10

Typ / Type / Tipo Type / Tipo	PAM B5	Øa2	Øb2	Øe2	f2	Øs2	Ød1	l1	t1	u1	o
A/F 301	71	160	110	130	5	M8	14	32	16.3	5	69
	80	200	130	165	5	M10	19	42	21.8	6	90
	90	200	130	165	5	M10	24	52	27.3	8	90

~ Kg	
PAM B5	A/F 301
71	6
80	6.5
90	6.5

Typ / Type / Tipo Type / Tipo	PAM B14	Øa2	Øb2	Øe2	f2	Øs2	Ød1	l1	t1	u1	o
A/F 301	63	90	60	75	2.5	6	11	32	16.3	5	69
	71	105	70	85	2.5	7	14	42	21.8	6	90
	80	120	80	100	3	7	19	52	27.3	8	90

~ Kg	
PAM B14	A/F 301
63	5
71	5.5
80	5.5

DE ALLGEMEINE TEILELISTE

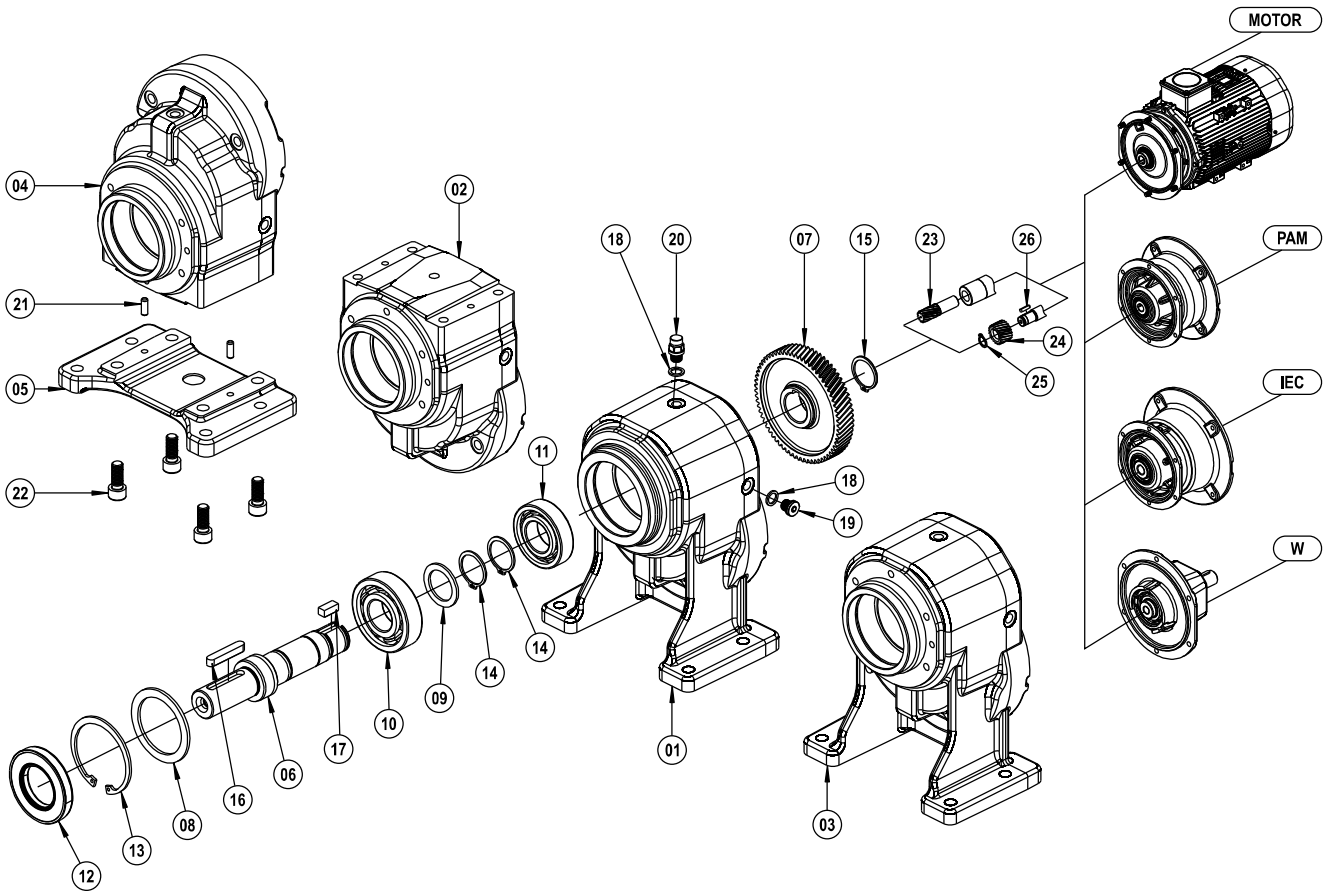
EN GENERAL PART LIST

IT GENERALE ELENCO DELLE PARTI

FR GÉNÉRALE LA LISTE DES PIÈCES

ES LISTE DE PIEZAS EN GENERAL

A / F / AF / AFM 301 ... 701



- | | | | | |
|-----------------------------------|---------------------------|----------------------------------|------------------------------|-------------------------------|
| 01 A Gehäuse | A Gear Case | A Ingranaggi Box | A Corps | A La caja de engranajes |
| 02 F Gehäuse | F Gear Case | F Ingranaggi Box | F Corps | F La caja de engranajes |
| 03 AF Gehäuse | AF Gear Case | AF Ingranaggi Box | AF Corps | AF La caja de engranajes |
| 04 AF-F-M Gehäuse | AF-F-M Gear Case | AF-F-M Ingranaggi Box | AF-F-M Corps | AF-F-M La caja de engranajes |
| 05 Fuss | Foot | Piede | Pied | Pie |
| 06 Abtriebswelle | Output Solid Shaft | Albero di uscita | Arbre de sortie | Eje de salida |
| 07 Antriebsrad | Driving Gear | Ingranaggio Conduttore | Rove d'entrée | Engranaje con ducido |
| 08 Distanzscheibe | Washer | Rondella | Rondelle | El apoyo a disco |
| 09 Distanzscheibe | Washer | Rondella | Rondelle | El apoyo a disco |
| 10 Kugellager | Bearing | Cuscinetto | Roulement à billes | Rodamiento de bolas |
| 11 Kugellager | Bearing | Cuscinetto | Roulement à billes | Rodamiento de bolas |
| 12 Öldichtung | Oil Seal | Paraolio | Joint Huile | Sello de aceite |
| 13 Sicherungsring (DIN 472) | Circlip (DIN 472) | Anello di sicurezza (DIN 472) | Circlip (DIN 472) | Anillo de seguridad (DIN 472) |
| 14 Sicherungsring (DIN 472) | Circlip (DIN 472) | Anello di sicurezza (DIN 472) | Circlip (DIN 471) | Anillo de seguridad (DIN 472) |
| 15 Sicherungsring (DIN 471) | Circlip (DIN 471) | Anello di sicurezza (DIN 471) | Circlip (DIN 471) | Anillo de seguridad (DIN 471) |
| 16 Passfeder (DIN 6885) | Key (DIN 6885) | Chiavetta (DIN 6885) | Clavette (DIN 6885) | Clave (DIN 6885) |
| 17 Passfeder (DIN 6885) | Key (DIN 6885) | Chiavetta (DIN 6885) | Clavette (DIN 6885) | Clave (DIN 6885) |
| 18 Distanzscheibe (DIN 7603) | Washer (DIN 7603) | Rondella (DIN 7603) | Rondelle (DIN 7603) | El apoyo a disco (DIN 7603) |
| 19 Ölstopfel (DIN 908) | Oil Plug (DIN 908) | Olio Tappo (DIN 908) | Couverture d'huile | Tapón |
| 20 Entlüftungstopfen | Vent Plug | Tappo di sfianto | Bouchon d'huile (DIN 908) | Ventilación (DIN 908) |
| 21 Bolzen | Pin | Pin | Goupille | Pasador |
| 22 Verschrauben (DIN 912) | Bolt (DIN 912) | Bullone (DIN 912) | Boulonner (DIN 912) | Atornillar (DIN 912) |
| 23 Antriebsritzel | Driving Pinion | Ingresso Pignone | Engrenage Z1 | Piñón de entrada |
| 24 Antriebsritzel (Mit Passfeder) | Driving Pinion (With Key) | Ingresso Pignone (Con chiavetta) | Engrenage Z1 (Avec clavette) | Piñón de entrada (Con clave) |
| 25 Sicherungsring (DIN 471) | Circlip (DIN 471) | Anello di sicurezza (DIN 471) | Circlip (DIN 471) | Anillo de seguridad (DIN 471) |
| 26 Passfeder (DIN 6885) | Key (DIN 6885) | Chiavetta (DIN 6885) | Clavette (DIN 6885) | Clave (DIN 6885) |

DE ALLGEMEINE TEILELISTE

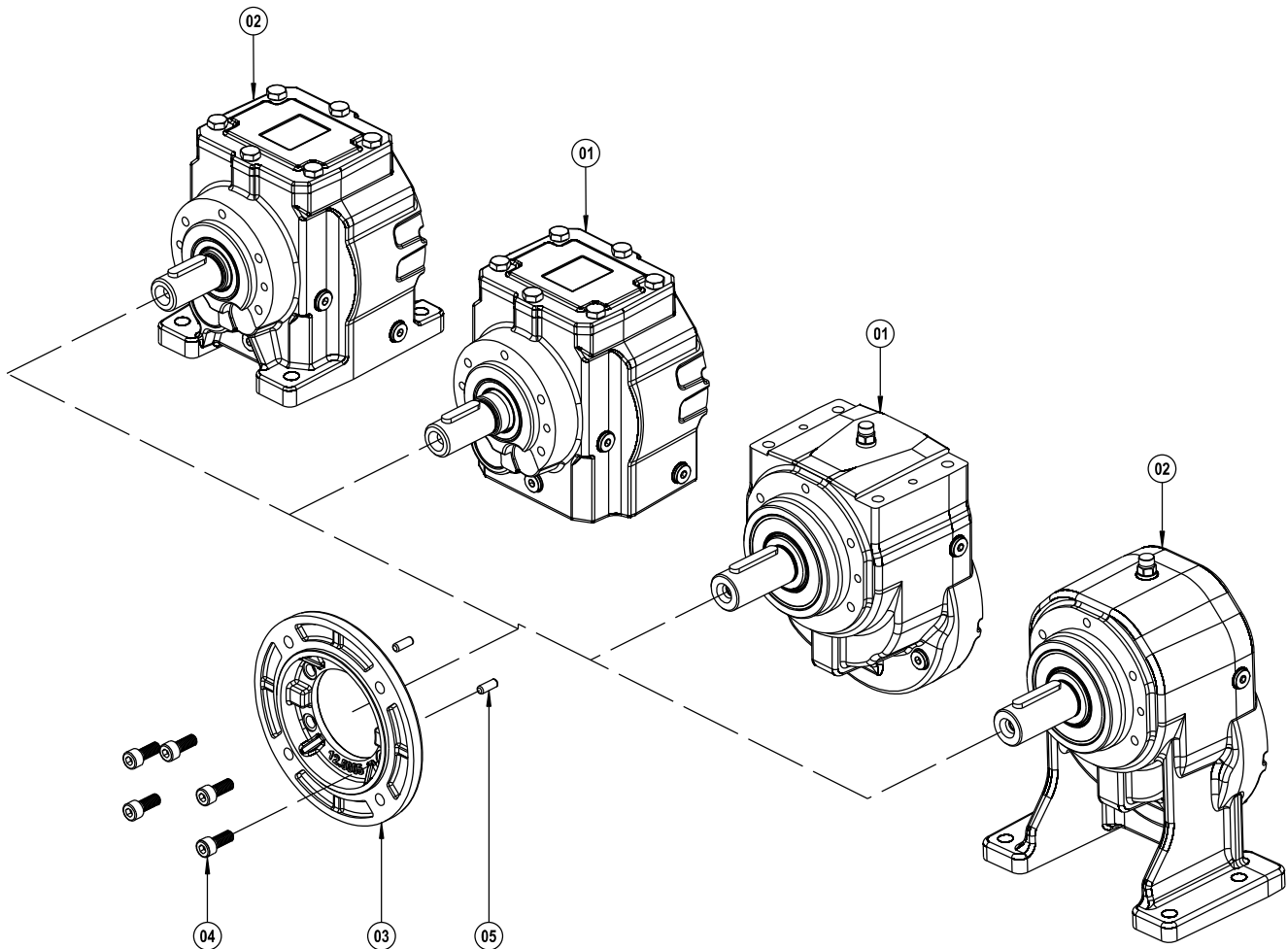
EN GENERAL PART LIST

IT GENERALE ELENCO DELLE PARTI

FR GÉNÉRALE LA LISTE DES PIÈCES

ES LISTE DE PIEZAS EN GENERAL

AF / F 301 ... 701 / 252 ... 902 / 253 ... 903 - B5



- 01 F Bausatz
- 02 AF Bausatz
- 03 B5 Abtriebsflansch
- 04 Verschrauben (DIN 912)
- 05 Bolzen

- F Kit
- AF Kit
- B5 Output Flange
- Bolt (DIN 912)
- Pin

- F Kit
- AF Kit
- B5 Flangia d'uscita
- Bullone (DIN 912)
- Pin

- F Kit
- AF Kit
- B5 Bride sortie
- Boulonner (DIN 912)
- Goupille

- F Kit
- AF Kit
- B5 Brida de solida
- Atornillar (DIN 912)
- Pasador